

# EASTER TEA CRUISE

- JOIN US ABOARD OUR BOAT KING ARTHUR FOR A CRUISE DOWN THE GLOUCESTER & SHARPNESS CANAL.
- EASTER CAKES AND TEA ONBOARD
- 'SPOT-THE-BUNNY' COMPETITION.
- TICKET INCLUDES ENTRY TO THE MUSEUM.
- MUSEUM CRAFTS

## TICKETS:

ADULTS £12

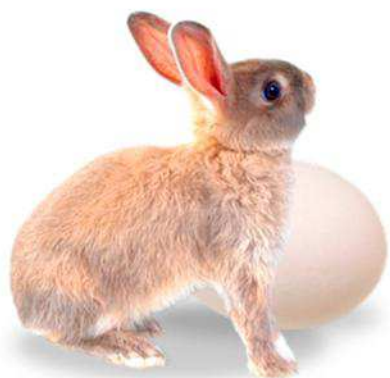
CHILD £8

FAMILY (TWO ADULTS AND  
TWO CHILDREN)) £36

## COMPETITION Decorate an Egg!

PRIZES AWARDED TO

- 3 - 5
- 6 - 8
- 9 - 11 YEARS.



4 APRIL 3.00PM - 5.00PM

TICKETS MUST BE BOOKED IN ADVANCE  
BOOK EARLY TO AVOID DISAPPOINTMENT

Llanthony Warehouse, Gloucester Docks, Gloucester, GL1 2EH

T - 01452 318200 E - Gloucester@thewaterwaystrust.org.uk